

Topic Medium Term Planning
2024/2025


Stardust Class Year 1/ 2.

Autumn B

School Theme: Reading for Pleasure.

Literacy Tree: Stanleys Stick/ Dinosaurs and all that Rubbish.

What is the world made of?

Week/ Date	<u>Literacy</u>	<u>Mathematics</u>	<u>Topic: Project Work</u> <u>Science/History</u> <u>Geography/Computing</u>	<u>Ongoing Curriculum</u> <u>Art/D&T /Music</u>	<u>Ongoing Curriculum</u> <u>RE/PSHE</u>	<u>Ongoing Curriculum</u> <u>PE/Forest school</u>
<p>Week 1 W/C 4th November</p>	<p><u>Literacy</u> <u>Tree-</u> <u>Week one</u></p>		<p><u>Monday- Carnival theme day</u> <u>Activity one: Bridgwater carnival</u>; Discuss the History of carnival, photos from the past, Miss Baker to bring in costumes to show around. Costumes/ dance/ carts. Music etc.</p> <p><u>Activity Two: Firework night.</u> Discuss that we also have firework night. What is bonfire night? Discuss.... Watch this video/ talk about the website: https://www.bbc.co.uk/bitesize/topics/zjkj382/articles/zjsqbdm Explain that the origins of our annual carnival in Bridgwater can be traced back to the Gunpowder Plot of 1605 when Guy Fawkes and his fellow conspirators, failed in their attempt to blow up the Houses of Parliament. That is why we have a statue in our town centre. Chn to then draw a picture of Guy Fawkes in their journals. Chn to take time and look at his clothes/ his body in proportion. Chn to also make a firework picture to be able to stick guy fawkes in it.</p> <p><u>Activity three: Making Carts.</u> Children to bring in cardboard boxes from their home. Children to make a carnival cart from construction materials and the boxes.</p> <p>Tuesday morning @10.30am - Carnival assembly.</p> <p>Tuesday afternoon to complete a parade around the school ground to show what we have made this week. Could be flags, could be a whole carnival cart, could be trick or treat bags or Diwali lanterns.</p>	<p><u>Music</u>- Follow Kapow MTP: Celebration music and Nativity practise.</p>	<p>PSHE: Jigsaw Puzzle 2 1. The same as... WALT: I can identify similarities between people in my class I can tell you some ways in which I am the same as my friends</p> <p>R.E Watch this video from BBC bitesize about Diwali... https://www.bbc.co.uk/bitesize/topics/zh86n39/articles/zjpp92p Why do they celebrate Diwali? How do they celebrate this? Discuss... Chn to make a Diwali lantern by following instructions. Discuss instructions and why they are important.</p> 	<p>Forest school with TW. teaching-WB's MTP P.E. with inspired schools and TW.</p>

Topic Medium Term Planning
2024/2025

Stardust Class Year 1/ 2.

Autumn B

School Theme: Reading for Pleasure.

Literacy Tree: Stanleys Stick/ Dinosaurs and all that Rubbish.

What is the world made of?

			<p>British values: morals, rule of law, democracy mutual tolerance and respect, individual liberty</p> <p>Wednesday: Computing: - Active bytes online safety planning.</p> <p>WALT;</p> <p>I can explain why it is important to be kind and polite. I agree and use sensible rules to keep me safe when i use technology.</p> <p>See separate planning.</p>			
<p>Week 2 - W/C 11th November.</p>	<p>Literacy Tree- Week Two</p>	<p>11th November- Remembrance Day. Friday 15th November- Children in Need dress up.</p> <p>Tuesday: Science: To name the four seasons and identify features of each one. Make seasonal tree picture to keep for calendars - paper collage</p>  <p>Wednesday: Computing: Describe my toys (Core)- teachers can change this unit to describe my animals... and then present their project to another class. See separate planning.</p> <p>WALT I can recognise ways that technology is used in my home and community.</p>	<p>Monday: Art: Use a range of techniques for pattern and texture to investigate fossils and shells. DT to make paper collage including spirals using different paper. Making puzzles using shapes e.g hexagons and creating tessellation pattern.</p>	<p>PSHE: Jigsaw Puzzle 2 2. Different from... WALT I can identify differences between people in my class I can tell you some ways I am different from my friends</p> <p>RE- Week 1 Lesson 1 - Why is Jesus important? WALT: Understand why Jesus is important to Christians.</p> <p><u>Key Question:</u> Why is Jesus important? Talk about the meaning of the words important, guide, help, inspire and special. Discuss with partner who is an important adult in my life. Discuss with the class. Chn to watch video and discuss. https://www.bbc.co.uk/bitesize/articles/zdjf4j</p>	<p>Forest school with TW teaching-WB's MTP P.E. with inspired schools and TW.</p>	

Topic Medium Term Planning
2024/2025


Stardust Class Year 1/ 2.

Autumn B

School Theme: Reading for Pleasure.

Literacy Tree: Stanleys Stick/ Dinosaurs and all that Rubbish.

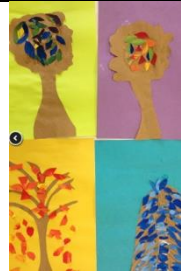
What is the world made of?

			<p>I can recognise the ways we use technology in our classroom.</p> <p>I can begin to identify some of the benefits of using technology</p>			
<p>Week 3 w/c 18th November.</p>	<p><u>Literacy Tree- Week three</u></p>		<p>World Childrens day- 20th November</p> <p>Monday and Tuesday: Science Seasons: Observe changes across the seasons: autumn, winter, spring and summer e.g. go outside and observe the changes to our trees in outdoor area. Make the second seasonal picture for Christmas calendars.</p> 	<p>Music- Follow Kapow MTP: Celebration music and Nativity practise.</p> <p>Wednesday ART: Christmas headdresses</p>	<p>PSHE: Jigsaw Puzzle 2</p> <p>3.What is 'bullying'?</p> <p>WALT I can tell you what bullying is I understand how being bullied might feel</p> <p><u>Rainbow time</u></p>	<p>Forest school with TW teaching-WB's MTP P.E. with inspired schools and TW.</p>
<p>Week 4 - w/c 25th November</p>	<p><u>Literacy Tree- Week Four</u></p>		<p>Monday: Finish last picture: Science Seasons: Observe changes across the seasons: autumn, winter, spring and summer e.g. go outside and observe the changes to our trees in outdoor area. Make the second seasonal picture for Christmas calendars.</p>	<p>Music- Follow Kapow MTP: Celebration music and Nativity practise.</p>	<p>PSHE: Jigsaw Puzzle 2 What do I do about bullying?</p> <p>WALT I know some people who I could talk to if I was feeling unhappy or being bullied I can be kind to children who are bullied</p> <p>RE Week 2 Lesson 2 and 3 - Christmas</p> <p>WALT: Understand the story of Christmas.</p>	<p>Forest school with TW teaching-WB's MTP P.E. with inspired schools and TW.</p>

School Theme: Reading for Pleasure.

Literacy Tree: Stanleys Stick/ Dinosaurs and all that Rubbish.

What is the world made of?



Take a photo of each child in front of the Christmas tree, frame it and send home for parents.

Tuesday:

Geography compare weather in our local area with weather in mountain environments. Look at physical features of our local area and mountain areas. **Compare to Everest.** Use geographical language including cliff, mountain, sea, valley, town, and village. **Cultural awareness** comparing different places and lifestyles including Arctic and Antarctic

History Significant people in history: Edmund Hillary. Thinking about what an explorer is. Comparing differences between equipment needed then and now. **Geography** What different weather pattern and environment would Edmund Hillary have come across. Children to sort weather cards/ STC to describe the weather in different environments.

Wednesday:

Christmas Stars:

Children to follow instructions to make Christmas stars.

Brain storm all the words pupils can think of associated with Christmas. Sort words into those to do with the birth of Jesus and those not. Explain we are going to watch a video of the first Christmas based on events written in the Bible. These events can be found in the New Testament part of the Bible. Can you listen carefully to what the angels say Jesus name means? Watch the Christmas story on

<https://request.org.uk/resource/rest-art/2014/06/11/the-story-of-christmas-2/>

Key question: How did Mary feel when the angel Gabriel visited her?

Key question: Why did the angel said don't be afraid?

Key question: What the angel said Mary's son would be called? Jesus What does that mean? (Saves from all they have done wrong).

Key question: What do you think it would be like being born in a stable?

Key question: How did the shepherds feel when all the angels appeared in the sky?

Key question: How did the shepherds feel when the angels visited them? Explain there were no street lights in those days, no electricity so it would be very bright.

Key question: How did the Wise Men know where to go?

Topic Medium Term Planning
2024/2025



Stardust Class Year 1/ 2.

Autumn B

School Theme: Reading for Pleasure.

Literacy Tree: Stanleys Stick/ Dinosaurs and all that Rubbish.

What is the world made of?

					<p>Key question: How do you think they felt going into a smelly stable with their very expensive gifts? Pupils to draw the characters angel Gabriel, Mary Joseph and Jesus, shepherds and wise men Ext to write speech bubbles for each character.</p>	
<p>Week 5 w/c 2nd December</p>	<p><u>Literacy Tree- Week Five</u></p>	<p>Monday 2nd December- Christmas production walk through Tuesday 3rd December- Christmas Production run through Thursday- 5th -Dress rehearsal am Friday- 6th December- Christmas Decoration Day</p> <p>Tuesday Table Placemats for lunch and party day - laminate</p> <p>Wednesday: Computing Year1 Multimedia Describe My Toys (Core) session 3: Make an information poster about a toy - changing this to describe my animal and present product to another class WALT I can use the keyboard on my device to enter text. I use my index fingers on the keyboard to build words and the space bar between words to add labels to an image.</p>	<p>Music- Follow Kapow MTP: Celebration music and Nativity practise.</p> <p>Monday Art: Table decorations for lunch and party day - laminate</p> 	<p>PSHE: Jigsaw Puzzle 2 5 .Making new friends WALT I know how to make new friends I know how it feels to make a new friend</p> <p>Rainbow time</p>	<p>Forest school with TW teaching-WB's MTP P.E. with inspired schools and TW.</p>	
<p>Week 6 w/c 9th December</p>	<p><u>Literacy Tree- Week Six</u></p>	<p>12/12/24- Christmas jumper day/ Pantomime/ Christmas day lunch. Monday-9th December 2 Christmas performances. Tuesday 10th December 2 Christmas performances. Wednesday 11th December- Church performance for toddlers in church.</p>		<p>PSHE: Jigsaw Puzzle 2 6.Celebrating difference; celebrating me WALT I can tell you some ways I am different from my friends I understand these differences make us all special and unique</p>	<p>Forest school with TW teaching-WB's MTP P.E. with inspired schools and TW.</p>	

Topic Medium Term Planning
2024/2025

Stardust Class Year 1/ 2.

Autumn B

School Theme: Reading for Pleasure.

Literacy Tree: Stanleys Stick/ Dinosaurs and all that Rubbish.

What is the world made of?

			Thursday 12 th December- Pantomime/ Jumper Day/ Christmas lunch.		R.E Lesson 4 - Christmas - The Magi	
Week w/c 16 th December Christmas theme week	<u>Christmas theme week.</u>	<u>Christmas theme week.</u>	16 th - 20 th December- Christmas Theme week. Friday 20 th December- Christmas party and Fun Day. 21/12/24- Winter Solstice	Music- Follow Kapow MTP: Celebration music and Nativity practise.	<p>Key question: Who can remember what we found out about the first Christmas?</p> <p>Key question: Where is this story from? (The Bible)</p> <p>Key question: Who likes being given Christmas presents?</p> <p>What do your presents say about you and the things that you like?</p> <p>The next part of the Christmas story talks about the very first Christmas presents being given to the baby Jesus. Watch the short video of the Christmas story. The story of Christmas - Jesus and the wise men. Saddleback kids. (It was prepared for Christian use so begins with a faith statement about Jesus being "the Son of God" - you will want to qualify this by saying "This is what Christians believe" After that it is an excellent and age appropriate summary of the story</p> <p>https://www.youtube.com/watch?v=Zk1LhngROCM Jesus is given three gifts. Key question: Who can remember what they were? Each gift says something about what Christians believe about Jesus.</p> <p>Gold says that Jesus is born to be King. Frankincense says that he is to</p>	Forest school with TW teaching-WB's MTP P.E. with inspired schools and TW.

**Topic Medium Term Planning
2024/2025**

Stardust Class Year 1/ 2.

Autumn B

School Theme: Reading for Pleasure.

Literacy Tree: Stanleys Stick/ Dinosaurs and all that Rubbish.

What is the world made of?

					be a kind of priest. Myrrh says he will one day die on a cross. (It is used to embalm dead bodies). What was your favourite present? Draw its picture.	
--	--	--	--	--	--	--